



Imagine a blissful life where you come home to sandy beaches, warm blue skies, and all the luxuries of a resort one could wish for; that too 24x365. Imagine a life where you do not go out to unwind but all those luxuries come to you to soothe you with peace and tranquility you always desired.

**WELCOME TO CHD RESORTICO.
YOUR 24 x 365, RAESORLIFE.**



At CHD Resortico tall towers stand overlooking winding pathways, undulating lawns, colourful flowering shrubs and an exquisite beach like pool. Where you lounge under a shack, get glorious tan on the sun-loungers, wade in the azure blue waters or work with your feet in the sand.

Experience an unmatched Mediterranean resort life created around 1 BHK smart serviced apartment.

LIVE. WORK. REJUVENATE.



FRONT VIEW



24 x 365 MEDITERRANEAN LIFESTYLE

A lifestyle as unique as you

Like a typical Mediterranean architecture, CHD Resortico follows thematic design with sloped roofs. Based on a rectangular floor plan and symmetrical primary façades, here open arches allow for breezes to flow freely through the house and verandas. Stuccoed walls, red tiled roofs, arched designs, wrought iron balconies with window grilles, and articulated door surrounds make your home a great vacation resort.

Find the glory of Mediterranean icons like corner clock towers, special exterior colors and cobble streetscapes without going out of CHD Resortico.

Architect's perspective view of CHD Resortico.



AERIAL VIEW





Architect's perspective view of CHD Resortico.



Architect's perspective view of CHD Resortico.

24 x 365 – CLUB LIFE

A venue of boundless beauty and tranquillity

CLUB LIFE

Overlooking the scenic swimming pool and exquisite lawns, this poolside club indulges you in giving up your evenings. Invite guests or have a gala time with the residents, we made sure that you get the best experience that exudes class and panache.

Club Features:

- Exclusive Lounge • Swimming Pool • Pool Deck • Gym & Spa
- Restaurant & Bar • Billiards Room • Yoga-Dance & Aerobics Room
- Kids' Room • Business Centre with Library • Pool Side Dining





Architect's perspective view of CHD Resortico.

24 x 365 – AQUA LIFE

Enjoy the calm of the blue hues

AQUA LIFE

Resortico, your very own escape to a Mediterranean world, a refreshing resort life where you can revel in the one of its kind luxurious Aqua Club. Here a central pool bar caters to a sandy beach pool with outdoor cabanas on one side and a regular pool on the other. These water bodies along with other world-class club features come together to give you an unmatched experience and create a picture perfect destination.

Features:

- Beach Pool • Pool Bar • Kids' Pool





Architect's perspective view of Shopping Plaza

24 x 365 – HIGH STREET LIFE

Create memories as vivid as the destination



HIGH STREET LIFE

Resort life is all about comfort and convenience. And we have tried to provide you the best with a shopping alley right below your beautiful apartment. The Shopping Arcade stretches elegantly across the ground level. It is designed to enhance the shopping experience with multi brand retail promenade.

Features:

- Shoping Arcade • Open Cafes





Architect's perspective view of Leisure Court CHD Resortico.

24 x 365 – ACTIVE LIFE

A plethora of choices to keep you physically fit and mentally agile.

Fitness and fun are integral part of CHD Resortico. Greet your morning with a jog on the jogging trail or energize yourself in the hammock area. Relax in the open sit out lounge, find a personal space to read a book in the reading nooks or pick your brain at the grand chess.

Features:

- Jogging trail • Grand Chess • Hammock Area
- Reading Nooks • Open Sit Out Lounges



24 x 365 – A SERENE GREEN LIFE

With our adaptive green landscaping, there is a seamless flow to the whole project. Stay fresh and healthy courtesy Yoga & meditation deck and Outdoor fitness gym. Spend your evening at Pablo Square catching up with your friends while admiring the lush surroundings or enjoy quality time with your family at the picnic area.

After all what is the purpose of resort living, if not to rejuvenate.

Features:

- Landscaped Green Belt • Putting Greens • Discovery Park • Yoga & Meditation Deck
- Outdoor Fitness Gym • Picnic Area





Artistic Impression.

24 x 365 – LEISURE LIFE

A place for taking the time and making it yours

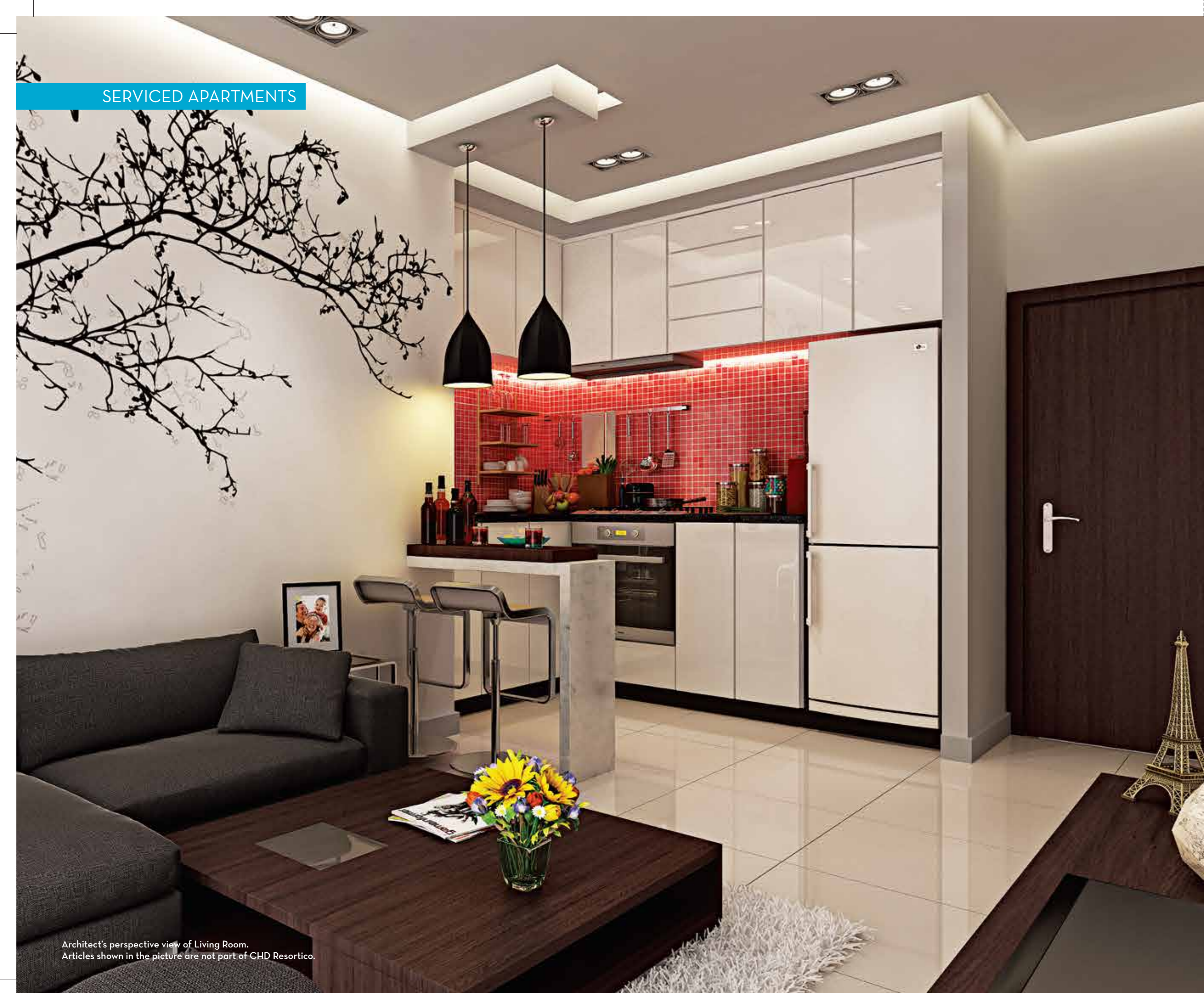
However active you may be, you feel for the time being that your life is your own. Creating a real dividing line between the things called work and leisure, Resortico has got Pueblo Square, a Mediterranean theme village area with cafes, outside dining and seating, kiosks with performance areas by artisans.

Features:

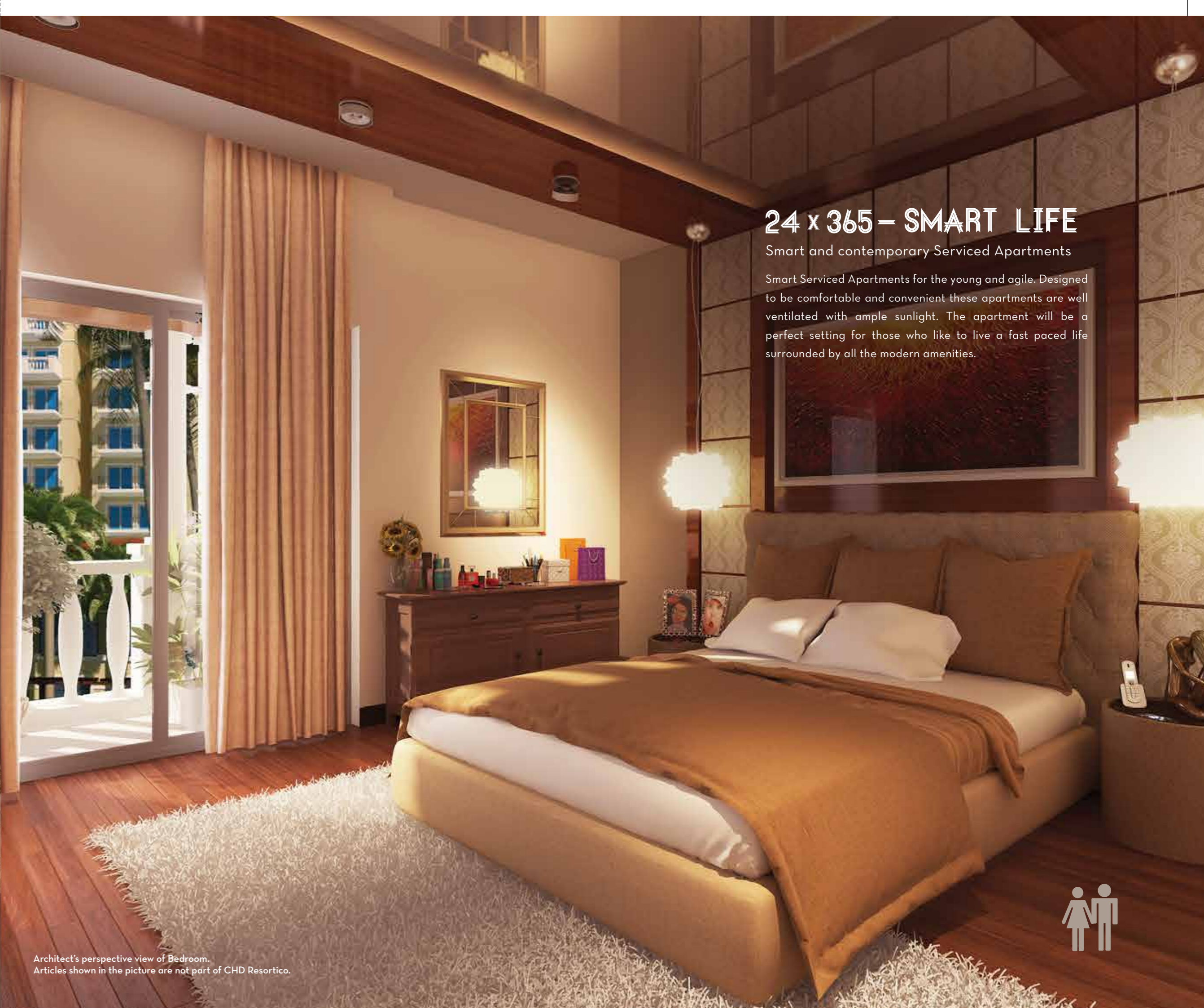
- Open Cafes • Paved Plaza • Open Air Theatre



SERVICED APARTMENTS



Architect's perspective view of Living Room.
Articles shown in the picture are not part of CHD Resortico.



Architect's perspective view of Bedroom.
Articles shown in the picture are not part of CHD Resortico.

24 x 365 – SMART LIFE

Smart and contemporary Serviced Apartments

Smart Serviced Apartments for the young and agile. Designed to be comfortable and convenient these apartments are well ventilated with ample sunlight. The apartment will be a perfect setting for those who like to live a fast paced life surrounded by all the modern amenities.



CHD RESORTICO ENTRANCE



Architect's perspective view of CHD Resortico

PERFECTLY LOCATED RESORT LIFE

Far from the pollution and urban noise, CHD Resortico is a short drive from Gurgaon towards the picturesque serenity of Sohna. It is located amid simple groves and clusters of flowers and shrubs facing the Aravallis, posing as the perfect lifestyle location.

LOCATION MAP

Located at Sohna, Gurgaon, CHD Resortico is perfectly suited for those who want a serene lifestyle with the utmost convenience.

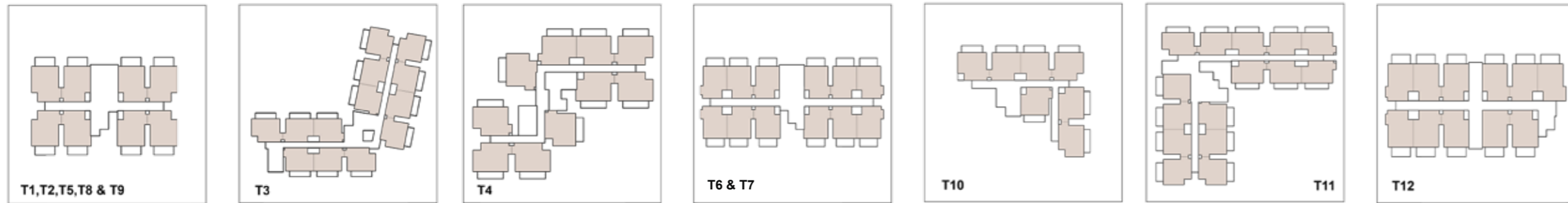
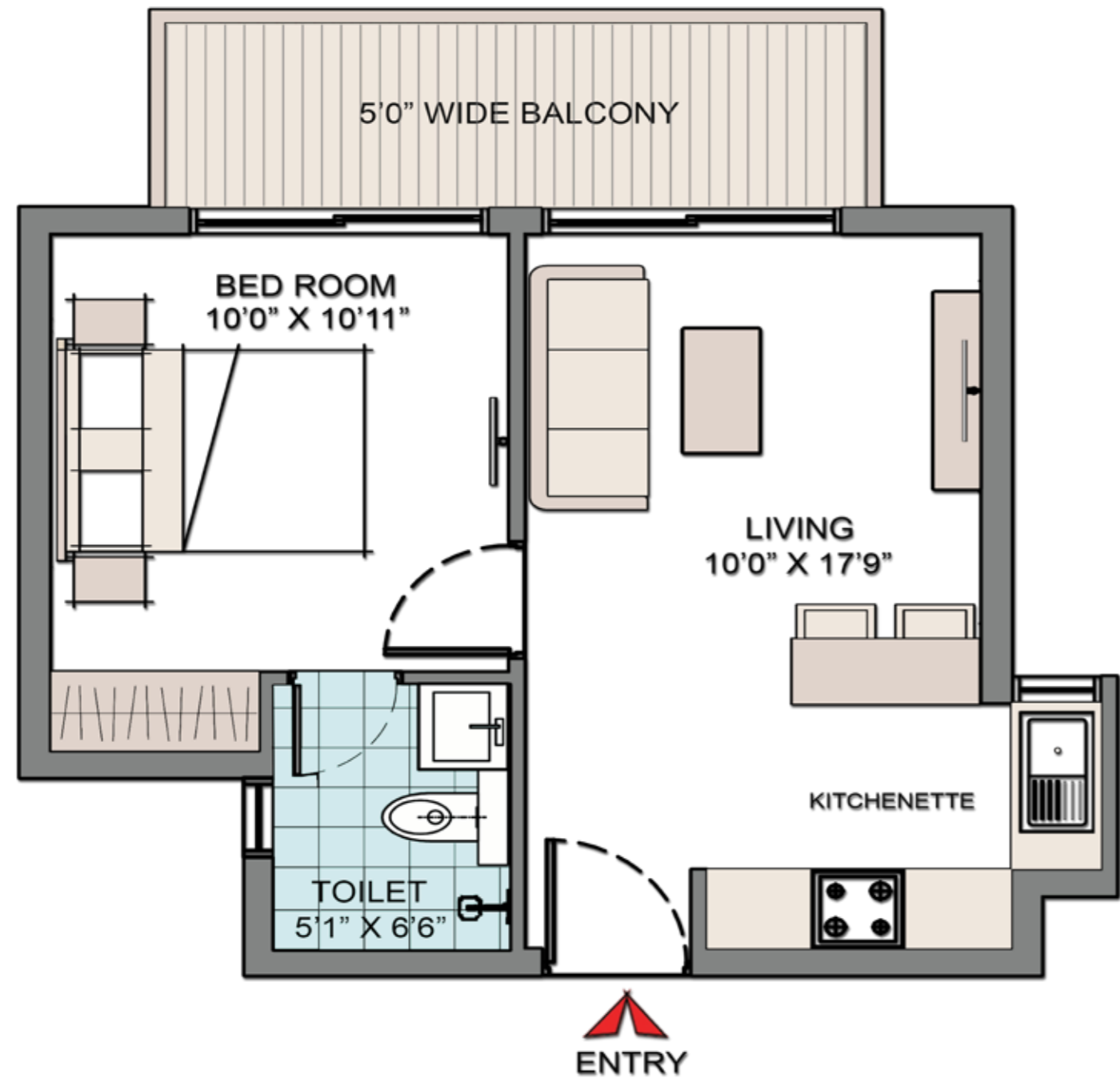
- 🕒 30 mins from IGI Airport
- 🚇 15 mins from Huda Metro Station
- 🏥 15 mins from Fortis/Artemis Hospital
- 🛍️ 10 mins from Mall & Multiplex



*Not to scale.

UNIT PLAN

SALEABLE AREA = 65.867 SQ.MT.



SITE PLAN



FACILITIES LEGEND

- 1 SITE ENTRY
- 2 SITE EXIT
- 3 ENTRANCE PLAZA
- 4 PLAZA FOUNTAIN
- 5 PALM ARRIVAL COURT
- 6 SHOPPING ARCADE
- 7 EL JARDIN COURT
- 8 RESORTICO CLUB
- 9 SITOUT AREA
- 10 SWIMMING POOL
- 11 POOL BAR
- 12 SUN DECK
- 13 BEACH EDGE
- 14 SANDY DECK AREA
- 15 KIDS' POOL
- 16 KIDS' PLAY AREA
- 17 SHOWER GAZEBO
- 18 LEISURE COURT
- 19 SITOUT LOUNGE
- 20 GRAND CHESS
- 21 READING NOOK
- 22 HAMMOCK AREA
- 23 MEDITERRANEAN GARDEN
- 24 LANDSCAPED LAWN
- 25 LEISURE WALK
- 26 PROMENADE
- 27 SITTING ENCLAVE
- 28 YOGA & MEDITATION LAWN
- 29 OUTDOOR FITNESS PARK
- 30 LILY POND
- 31 FOUNTAIN
- 32 JOGGING TRAIL
- 33 DISCOVERY PARK
- 34 FESTIVAL/PICNIC LAWN
- 35 PUEBLO SQUARE
- 36 KIOSKS
- 37 OPEN AIR THEATRE
- 38 GREEN AREA
- 39 GOLF PUTT AREA
- 40 VOLLEYBALL COURT
- 41 OFFICE BLOCK
- 42 RAMP
- 43 SECURITY CHECK POINT
- 44 DRIVEWAY
- 45 PARKING

STILT LEVEL ACTIVITIES
PARKING AT LOWER, UPPER PODIUMS & STILT AREAS

PHASES
PHASE 1 (T1 to T6, T8, T9, T11 & T12)
PHASE 2 (T7, T10 & 41)

SPECIFICATIONS OF SERVICED APARTMENTS

Flooring

| | |
|---------------|---|
| Living/Dining | Vitrified tiles |
| Bedroom | Laminated Wooden flooring |
| Lift Lobby | Standard Indian Marble/ Designer Tiles at entry level & Stone/Designer Tiles in above Floor Lobbies |

Wall Finish

| | |
|------------|--|
| Internal | Oil bound distemper |
| External | Exterior Paint of pleasing shade |
| Lift Lobby | Combination of OBD Paint and Stone/Tiles |

Kitchen

| | |
|----------|--|
| Flooring | Vitrified tiles |
| Dado | Ceramic Tiles till 600mm above the counter area, rest painted with Oil Bound Distemper |
| Fittings | Granite Counter with Stainless Steel Sink |

Doors

| | |
|-----------------------|--|
| Main Entry Door | Seasoned Hardwood Frame with polished Shutter and hardwares |
| Internal | Seasoned Hardwood Frame with Flush Shutters/Moduled Skin Door Shutters with enamel paint |
| External fenestations | Anodised aluminium doors and shutters with best quality hardware and plain glass |

Toilets

| | |
|--------------------------|---|
| Flooring | Combination of one or more Anti-Skid Ceramic Tiles |
| Dado | Combination of one or more Ceramic Tiles upto 2100 mm |
| Sanitaryware/CP Fittings | Designer wash basin in master toilet, matching wall mounted WC, designer sanitary fixtures in toilets, Single lever CP Fittings and Provision for Geysers |

Balconies

| | |
|-----------|-------------------------|
| Floorings | Anti Skid Ceramic Tiles |
|-----------|-------------------------|

Windows

| |
|--|
| Anodised Aluminium with sliding/casement with good quality hardwares |
|--|

*The Company reserves its right to amend/alter the aforesaid specifications without any prior notice. The Company do not offer for sale any other article/things shown in the brochure.

SPECIFICATIONS OF SERVICED APARTMENTS

Air Conditioning

Provisions of electrical sockets in the bedroom and living room and provision of drain and defined route for condensation pipe and marked space for Outdoor units

Power Back up

24x7 Power back-up in common areas & facilities and emergency services i.e. lifts and 2 KVA for every unit.

Elevators

One passenger lift and One service/stretcher lift in each tower

3 Tier Security

Secured gated community with Boom Barrier, access control at main entrance, manual patrolling and 24 hours digital video recording surveillance of building at entry points, CCTV in secluded areas for monitoring and recording.

Water Tank

Combination of underground water tank with pump house and overhead water tank (on each tower) for uninterrupted supply of water.

Structure

The structure of all the towers & other buildings of the project have been designed as per provisions prescribed in the National Building Code of India and the relevant codes of Bureau of Indian Standards for all seismic loads, wind pressure & structural safety from earthquake of the intensity expected in the Zone IV.

Electrical

All Electrical wiring in concealed conduits' provision for adequate light & power points, Telephone & TV outlets in Living cum Dining and the bedroom: Modular switches & protective MCB's.

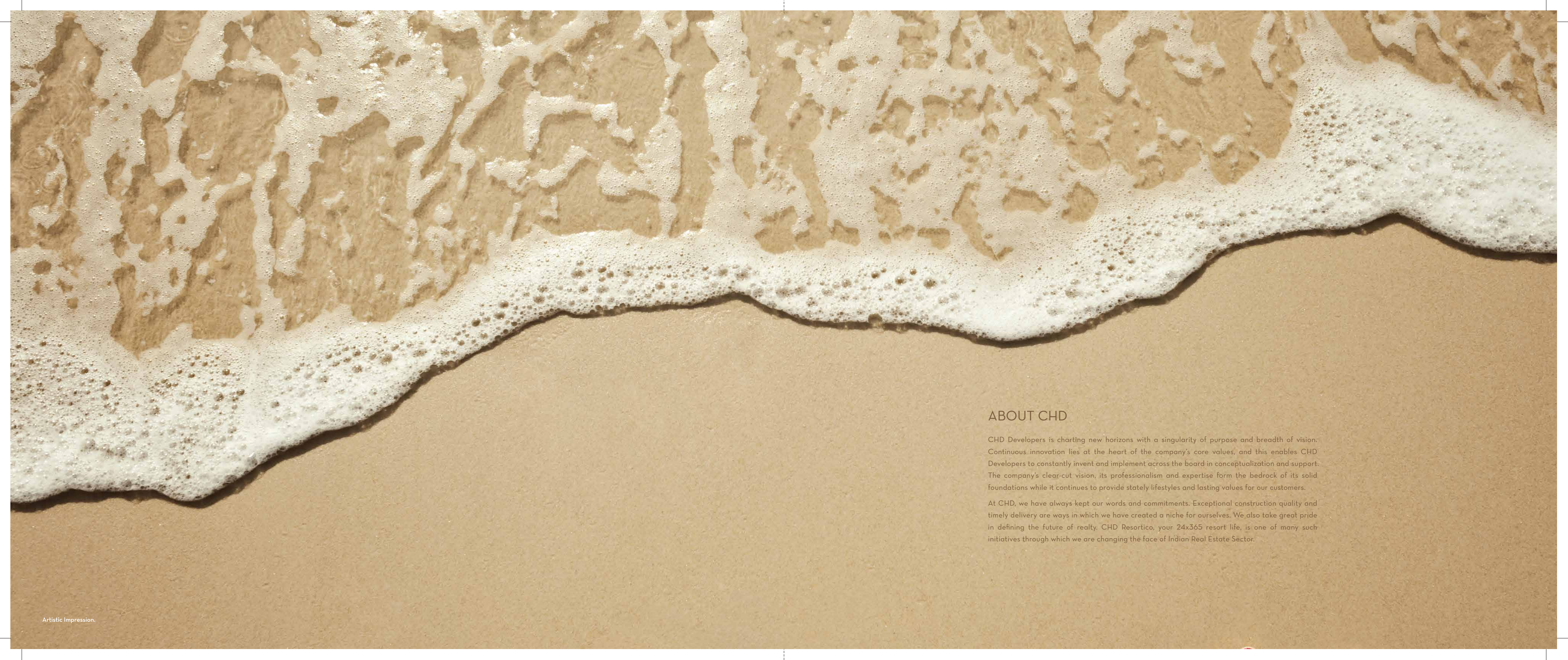
Technology

| | |
|---------------------|--|
| Energy Conservation | Energy Efficient Products, Efficient Light Fixtures in common areas, provision of Solar Lights in Landscape, Provision of Solar Water Heating System in each unit. |
| Water Management | Rainwater Harvesting System, Sewage Treatment Plant, Water Softener and Automatic Pressurized Water Supply, Dual Water Supply System |

Fire Safety

Fire Protection and Fire Fighting System as per National Building Code requirement / approval from local authority.





ABOUT CHD

CHD Developers is charting new horizons with a singularity of purpose and breadth of vision. Continuous innovation lies at the heart of the company's core values, and this enables CHD Developers to constantly invent and implement across the board in conceptualization and support. The company's clear-cut vision, its professionalism and expertise form the bedrock of its solid foundations while it continues to provide stately lifestyles and lasting values for our customers.

At CHD, we have always kept our words and commitments. Exceptional construction quality and timely delivery are ways in which we have created a niche for ourselves. We also take great pride in defining the future of realty. CHD Resortico, your 24x365 resort life, is one of many such initiatives through which we are changing the face of Indian Real Estate Sector.

